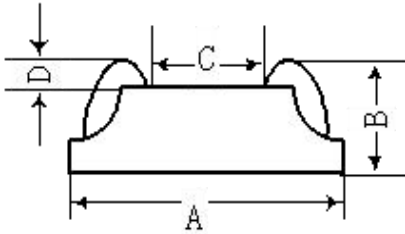
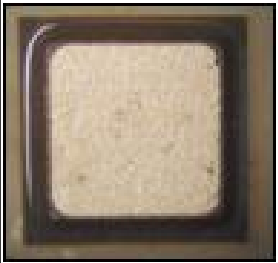


EPI 系列

VOLTAGE 100 to 800 Volts
CURRENT 1.0~10.0 Amperes



Dimension Part number	A	B	C	D
	Limits $\pm 1_2$	Limits ± 2	Limits ± 3	Limits ± 1
1A	50	12	27	2
2~4A	64	12	41	2
3~6A	72	12	49	2
5~8A	84	12	61	2
8~10A	95	12	72	2

Parameter	Symbol	SF50	SF64	SF72	SF84	SF95	Unit
Peak Inverse V	PIV	100 ~ 800					Volts
Forward Current	IF	1	3	5	8	10	Amps
Forward Volts	VF	PIV: 200V VF spec. 0.9 PIV: 400V VF spec. 1.25 PIV: 600V VF spec. 1.7 PIV: 800V VF spec. 2.2					Volts
Reverse recovery time	TRR	20~35					ns
Surge Current	IFSM	30	100	125			Amp/8.3ms
Leakage at 100°C	IRFM	400					uA
Junction Temp	TJ, MAX	150					Degrees °C
Leakage 25°C	IRFM	10.0					uA
Storage Temp	TST	-65 ----- 150					Degrees °C
Die Attach Temp	TD	340~375					Degrees °C/2 min

TRR 波形振盪較小(應用上幹擾較小)

- 本公司提供PG光刻制程
- 可根據客制要求電性特性;
 - 低溫升產品
 - 大功率產品
 - 白/黃金擴散產品。

